



Anne Brehm

May 18, 1920 - December 21, 2014

ANNE (SOSH) BREHM

Anne (Sosh) Brehm, 94, passed away December 21, 2014, at Villa St. Francis in Olathe, KS. Born May 18, 1920, in Gary, Indiana, she was the daughter of George Sosh and Susana Golya. Anne graduated from Froebel High School and St. Mary's Mercy Hospital School of Nursing in Gary, Indiana. In 1943 she joined the Army Nurse Corps and served as a nurse in the China-India-Burma theater during World War II attached to the 172nd General Hospital in Kunming, China; the 69th General Hospital in Ledo, Burma; and the 71st Field Hospital in Bombay, India. During her service she achieved the rank of 1st Lieutenant.

Upon leaving the military she married Richard Brehm. They had two children, Suzanne and Alan. As her children grew older Anne worked as a nurse at St. Margaret's Hospital in Kansas City, Kansas and subsequently in private practice for Drs. Robert Fairchild and William McEachen. After she retired from her nursing career, she appeared as an extra in the movie "Article 99" which led to appearances in other locally filmed movies and television commercials.

She is a charter member of the Women in Military Service Memorial in Washington, DC and a quotation of hers is etched on one of the glass tablets

on the roof of the memorial.

Anne loved music, writing poetry, watching the Chiefs, Royals and Jayhawks, her dog Buffy, but mostly her two children and their families. She was a staunch Byzantine Catholic who loved and practiced her faith openly and was a member of Sacred Heart Parish for 54 years.

Anne is survived by her daughter, Suzanne Bond (Raymond), and son Alan (Paula). Granddaughters Jamie Brehm (Scott Benson) and Annie LaFleur (Paul); Step grandchildren Cynthia Cox (Rory), Ray Bond (Kristie); and 9 great grandchildren – the newest being Vega Benson; Sisters-in-law Jane Sosh, Ft. Wayne, Indiana, and Veronica Sosh, Boca Raton, Florida and numerous nieces and nephews.

She is predeceased by her parents, George and Susana Sosh, brothers Albert, John, George and Mike and sisters Mary, Julia and Helene.

The family would like to thank the nurses at Villa St. Francis, especially Nurse Mary and Sister Ann for their loving care and nurse Jody from Catholic Community Hospice for standing vigil with Anne at the end.

Visitation will be 9-10AM., Monday December 29, 2014 at Maple Hill Funeral Home. Funeral services will be held at 10 AM., Monday at the chapel. Burial will follow services at Gate of Heaven Cemetery. Memorial donations may be sent to the Womens Memorial Foundation; Dept. 560 Washington, DC 20042.0560. Online: www.womensmemorial.org. Online condolences may be left on Anne's website at www.maplehillfuneralhome.com

Cemetery Details

Gate Of Heaven

N. 126th Street & Parallel Parkway
Kansas City, KS 66109

Previous Events

Visitation

DEC 29. 9:00 AM - 10:00 AM (CT)

Maple Hill Funeral Home
3300 Shawnee Dr
Kansas City, KS 66106
(913) 831-3345
info@maplehillfuneralhome.com
<https://maplehillfuneralhome.com>

Service

DEC 29. 10:00 AM (CT)

Maple Hill Funeral Home
3300 Shawnee Dr
Kansas City, KS 66106
(913) 831-3345
info@maplehillfuneralhome.com
<https://maplehillfuneralhome.com>

Tribute Wall



“ *Maple Hill Funeral Home and Cemetery created a Tribute Video in memory of Anne Brehm*



Maple Hill Funeral Home and Cemetery - December 24, 2014 at 12:05 PM

AB

that was an over welling tribute to a great women

anna bish - December 28, 2014 at 03:25 PM

BS

Fantastic video of your mother. Our prayers are with you all Bob & Joan Samenus.

Bob & Joan Samenus - December 29, 2014 at 09:54 AM

WR

This was a truly moving tribute to your Mother. Our prayers are with your family. Such a honorable woman. Sincerely, Jim & Wanda Reiter and family.

Wanda Reiter - December 29, 2014 at 03:58 PM

EJ

What a wonderful video for a wonderful woman. Your Mom will be missed by many. Our thoughts are with you all. Love Ed & Gary

Ed Nemergut jr - December 30, 2014 at 07:22 AM



“ *Anne Brehm*

October 08, 2023 at 10:59 AM



“ *Anne Brehm*

September 17, 2022 at 08:24 PM



“ *3 files added to the album LifeTributes*



Maple Hill Funeral Home and Cemetery - December 29, 2014 at 08:48 AM



“ *I am grateful for the life of Anne Brehm. Thanks to her service and to the service of others in our armed forces, my family and I have been able to lead our lives in freedom and peace.*

Bob in Grandview, Missouri - December 28, 2014 at 03:37 PM

PM

“ Suzanne, We are so sorry to read of your Mother's passing. I know your heart is heavy and you will miss her. We were remembering her and my mother getting together and how much fun they had. I never make a large pot of coffee without remembering her teaching me how to do it. Such fun memories we have had through the years. Unfortunately because of our situation, we will be unable to attend the service. Please know that our love, thoughts and prayers are for you and your family. Love, Mary and Peggy

Peggy L. Myers - December 28, 2014 at 10:33 AM

JC

“ Alan, so sorry the hear about the loss of your Mom. What a beautiful tribute and I see that her smile has been passed on generation to generation. Thanks for her service to our country. May she rest in eternal peace. God bless you and your family at this time. With deepest sympathy. June T Coffey



June Coffey - December 28, 2014 at 09:43 AM

DH

“ Friends, I am saddened to hear of Annie's passing. We became friends while my dad was at Sweet Life. I remember Annie's smile, positive attitude, love of KU basketball and how proud she was of her service during WWII. She was a wonderful lady .

May fond memories provide you comfort at this difficult time.

Dennis Horner

Dennis Horner - December 28, 2014 at 06:15 AM



“ *What a beautiful tribute to an amazing woman! Our deepest condolences to the family. Hugs and prayers. Love, Rob and Michelle Sims and family.*

Michelle Sims - December 27, 2014 at 08:18 PM



“ *3 files added to the album Life Tributes*



Maple Hill Funeral Home and Cemetery - December 27, 2014 at 01:48 PM

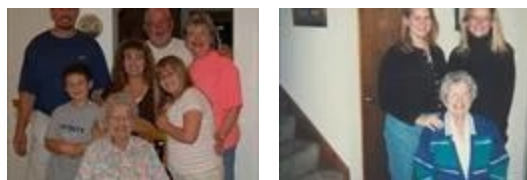
SU

“ *0 file added to the tribute wall*

Suzanne - December 27, 2014 at 09:19 AM

SU

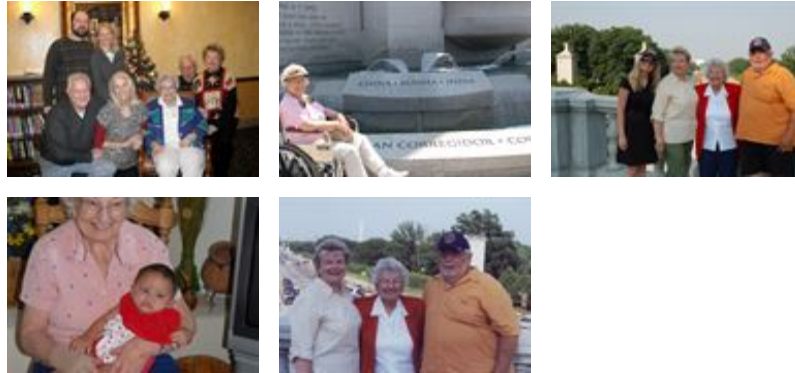
“ *2 files added to the tribute wall*



Suzanne - December 24, 2014 at 02:56 PM



“ 64 files added to the album *Life Tributes*



Maple Hill Funeral Home and Cemetery - December 24, 2014 at 11:35 AM

KA

“ So sorry to hear of your loss. Mom always had her "Ann izms" dont sit on the concrete in the fall, spring. Asprin is good for everything. We were reminiscing the good times, I will always remember the *WHOLE* carton on chocolate marshmallow eggs you hid for us at Easter! It was just like having family next door, climbing that hill (when you're little thats a big hill) to your house. You and the family couldnt get out of the car without the Bittners greeting you. Love
Karen Bittner Robinson

karen - December 24, 2014 at 08:56 AM