



Larry R. Beets

February 3, 1950 - May 4, 2015

Larry R. Beets, a beloved son, brother and uncle, of Olathe, KS, passed away on Monday, May 4, 2015 at his home at the age of 65. Larry was born the son of William J. Beets II and Wanda J. Guthrie on February 3, 1950 in Kansas City, KS. Survivors include his mother, Wanda J. Howe; two brothers, Jamie Howe, Robert Howe and his wife Mary; two sisters, Cheryl A. Bowers and Becky Beets. Larry also leaves behind a loving extended family that includes nieces, nephews and cousins. He is preceded in death by his father; brother, William J. "Billy Joe" Beets III. Visitation will be held on Wednesday, May 13, 2015 from 6-8:00 PM followed by a funeral service on Thursday, May 14, 2015 at 1:00 PM both being held at Maple Hill Funeral Home. Burial will follow at Maple Hill Cemetery. To share a memory or to leave condolences, please visit www.maplehillfuneralhome.com.

Cemetery Details

Maple Hill Cemetery

2301 S 34th St
Kansas City, KS 66106
(913) 262-6610
info@maplehillfuneralhome.com

Previous Events

Visitation

MAY 13. 6:00 PM - 8:00 PM (CT)

Maple Hill Funeral Home
3300 Shawnee Dr
Kansas City, KS 66106
(913) 831-3345
info@maplehillfuneralhome.com
<https://maplehillfuneralhome.com>

Funeral Service

MAY 14. 1:00 PM (CT)

Maple Hill Funeral Home
3300 Shawnee Dr
Kansas City, KS 66106
(913) 831-3345
info@maplehillfuneralhome.com
<https://maplehillfuneralhome.com>

Tribute Wall



“ *Maple Hill Funeral Home and Cemetery created a Tribute Video in memory of Larry R. Beets*



Maple Hill Funeral Home and Cemetery - May 13, 2015 at 04:53 PM



“ *Larry R. Beets*

October 08, 2023 at 10:59 AM



“ *Larry R. Beets*

September 17, 2022 at 08:24 PM

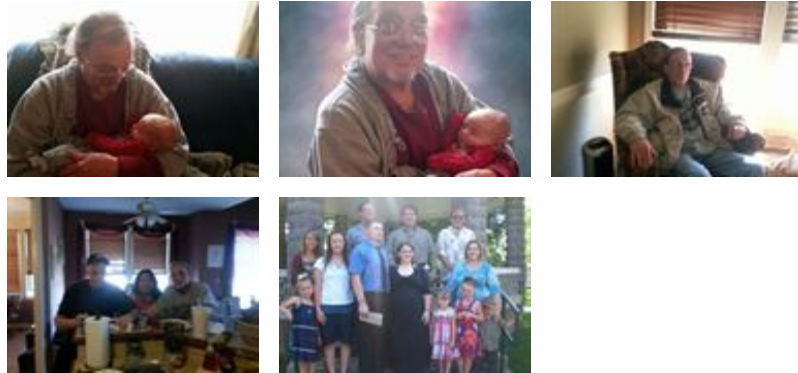


“ *So sorry to hear of Larry passing away. I'm sorry I couldn't be there. Love all of you. Deana*

deana carroll - May 13, 2015 at 09:23 PM



“ 21 files added to the album *Life Tributes*



Maple Hill Funeral Home and Cemetery - May 13, 2015 at 04:42 PM

SH

“ *It was an honor to know Larry. He was a very kind and compassionate person and a great friend to my husband, Randy. He will be missed. Shirley Hufford*

shirley hufford - May 12, 2015 at 09:42 AM