



## Sherry L. Enochs

October 28, 1955 - July 25, 2023

Sherry L. Enochs, 67, of Kansas City, Kansas passed away July 25, 2023 at Parkway Care and Rehabilitation Center in Edwardsville, KS after a hard fought battle with cancer. Sherry was born on October 28, 1955, to the loving parents, Albert and Wilma Enochs. Despite the challenges life presented her, she embraced every moment with a warm heart and a radiant smile.

Sherry's journey began with cerebral palsy, a condition that shaped her life's path, but it never hindered her spirit. She was an inspiration to everyone who had the privilege of knowing her. Sherry's kind soul and compassionate nature made it easy for her to connect with people from all walks of life. She never knew a stranger, and her loving and outgoing personality left an indelible mark on the hearts of those she encountered.

During her time there, the staff and residents at Parkway Care and Rehabilitation affectionately called her "sissy," a testament to the bond she forged with those around her. Sherry had an innate love for children and found joy in holding them close, offering them warmth and comfort with her gentle touch. Music held a special place in Sherry's heart, and she found solace in the melodies of Ronnie Millsap and other cherished artists.

She is preceded in death by her parents and a sibling, Gary Cofer. Sherry leaves behind her loving siblings, who will carry her memory in their hearts forever, Larry Enochs (Vicki), Jerry Enochs, Gloria Martel (Ernest), Harry Enochs, Rick Enochs; half siblings Albert Enochs Jr. (Michelle) and Tammy Rose Enochs; and many nieces and nephews.

A visitation will be held from 11:00-12:00 with a celebration of life beginning at 12:00 PM Saturday August 5, 2023 at Maple Hill Funeral Home.

# Cemetery Details

## Maple Hill Cemetery

2301 S 34th St  
Kansas City, KS 66106  
(913) 262-6610  
info@maplehillfuneralhome.com

# Previous Events

## Visitation

AUG 5. 11:00 AM - 12:00 PM (CT)

Maple Hill Funeral Home  
3300 Shawnee Dr  
Kansas City, KS 66106  
(913) 831-3345  
info@maplehillfuneralhome.com  
<https://maplehillfuneralhome.com>

## Celebration of Life

AUG 5. 12:00 PM (CT)

Maple Hill Funeral Home  
3300 Shawnee Dr  
Kansas City, KS 66106  
(913) 831-3345  
info@maplehillfuneralhome.com  
<https://maplehillfuneralhome.com>

# Tribute Wall



“ *Maple Hill Funeral Home and Cemetery created a Tribute Video in memory of Sherry L. Enochs*



---

**Maple Hill Funeral Home and Cemetery** - August 04, 2023 at 12:38 PM



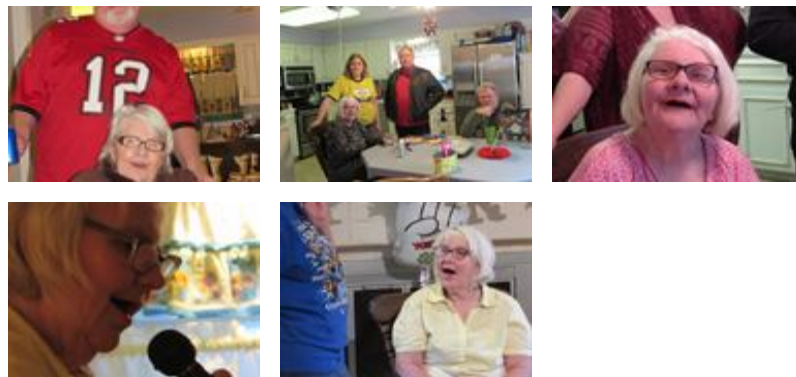
“ *Sherry L. Enochs*

---

October 08, 2023 at 10:59 AM



“ *53 files added to the album Life Tributes*



---

**Maple Hill Funeral Home and Cemetery** - August 04, 2023 at 12:34 PM

KC

“ *Our family has known sherry for many, many years. Always had a smile on her face. She would talk to everyone. Never knew a stranger. R.I.P. Sherry.*

---

**Kathy crump** - July 29, 2023 at 09:56 PM

PS

*RIP Sherry you were an amazing example for people around you showing kindness and love.*

---

**Pam sharp** - August 03, 2023 at 10:50 AM